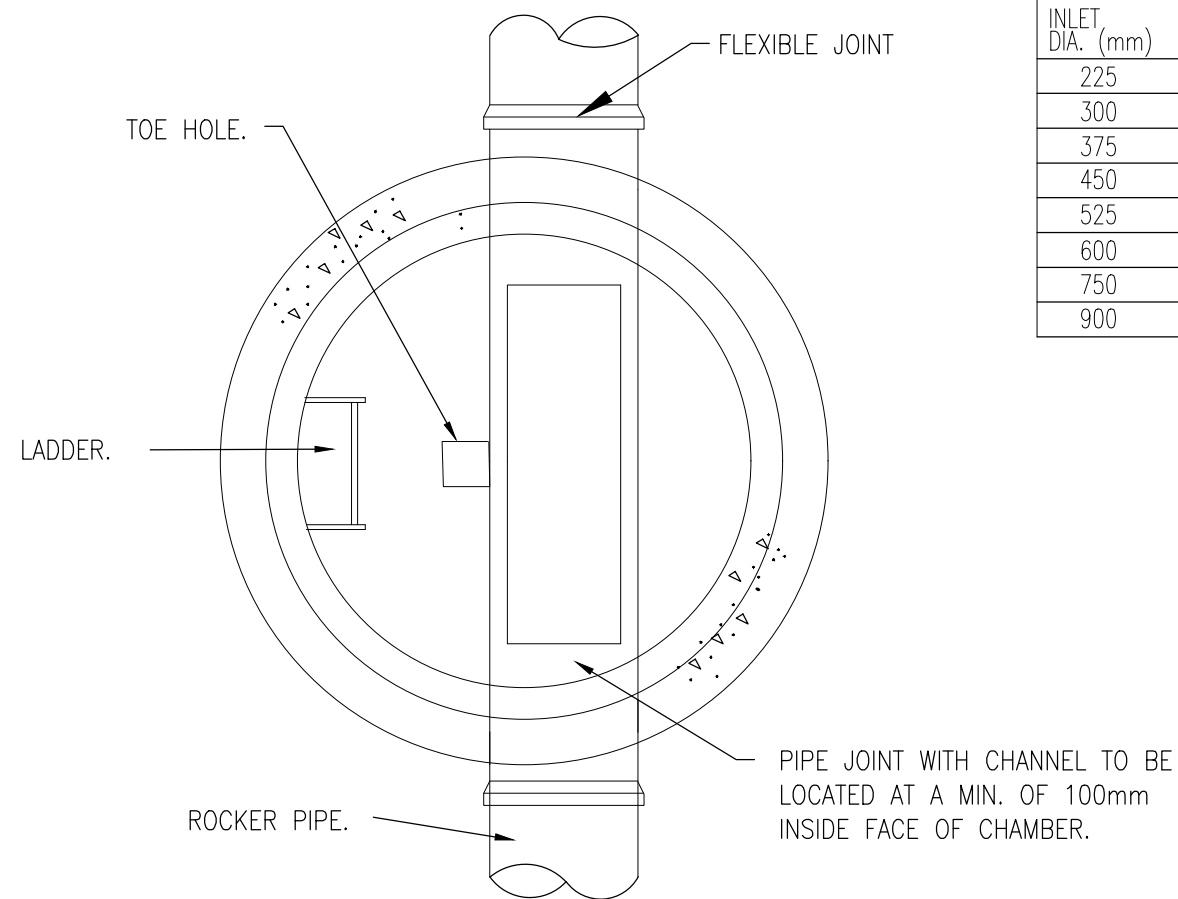
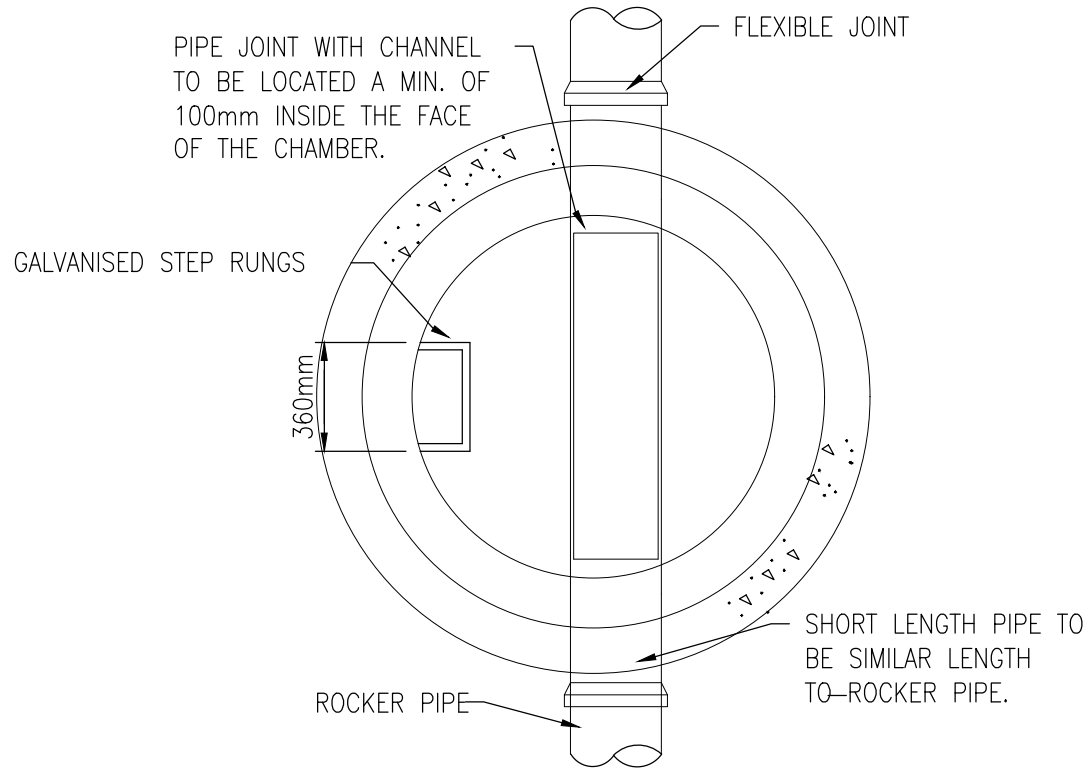


MANHOLE DETAIL (3.0m TO 6.0m)



SECTION B - B

INLET DIA. (mm)	DROP DIA. (mm)
225	300
300	375
375	375
450	450
525	450
600	450
750	600
900	600

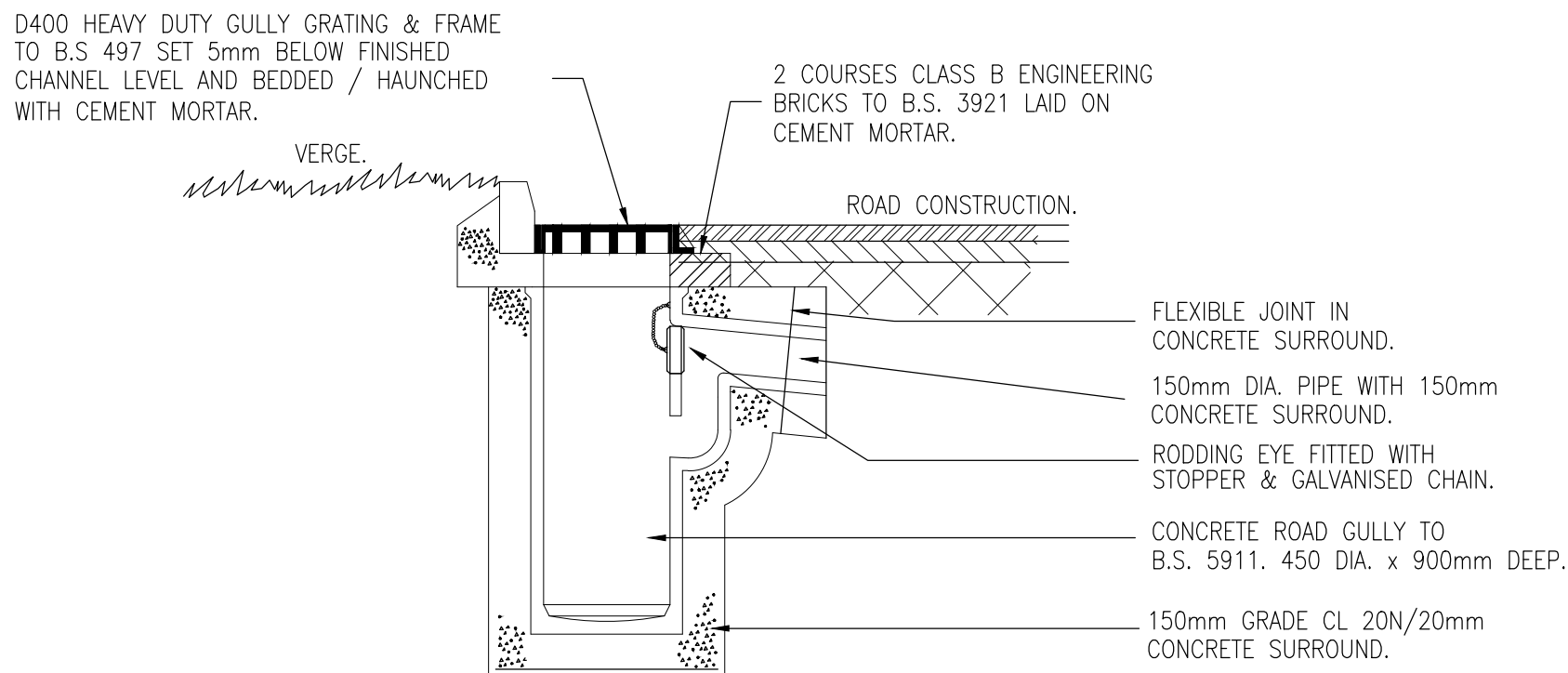


SECTION A - A

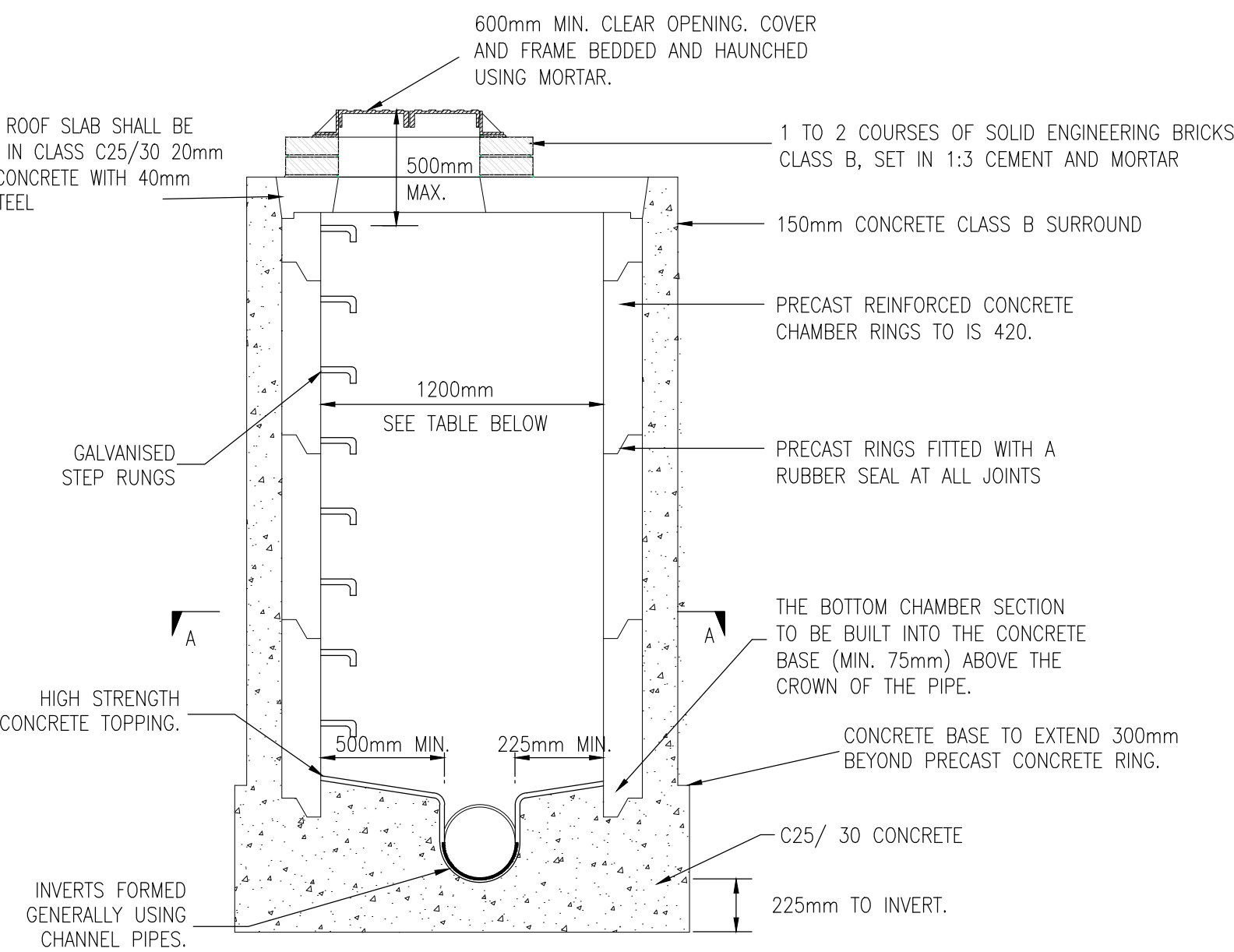
- NOTES
1. UNITS ARE SUPPLIED WITH THE STANDARD (MINIMUM) PIPEWORK SIZE, AND ORIENTATION SHOWN ON THE DRAWING. THE STANDARD EN858-1 STATES MINIMUM CONNECTION SIZES. UNITS ORDERED WITH DIFFERENT SIZE CONNECTIONS MAY NOT BE FULLY COMPLIANT WITH THE STANDARD. PLEASE CONSULT OUR SALES DEPARTMENT FOR DETAILS OF AVAILABLE OPTIONS, BUT PLEASE NOTE WE DO NOT ALTER INTERNAL PIPEWORK.
 2. ALL UNITS SUPPLIED ARE CLASS 1 AND INCLUDE A COALESCER.
 3. EXTENSION PARTS FOR DEEPER INVERTS CAN BE PROVIDED FOR ON SITE ASSEMBLY.
 4. ALL UNITS REQUIRE APPROPRIATE CONCRETE BASE, COVER AND FRAME TO SUIT APPLIED LOADINGS.
 5. THIS DRAWING SHOULD BE USED FOR DIMENSIONAL INFORMATION ONLY.
 6. A Ø76mm TUBE IS SUPPLIED TO HOUSE AN OIL ALARM PROBE.

UNIT	FLOW (l/sec.)	DIM.'A'	DIM.'B'	DIM.'C'	DIM.'D'	DIM.'E'
NSBE030	30.0	4265	2263	1680	1580	700

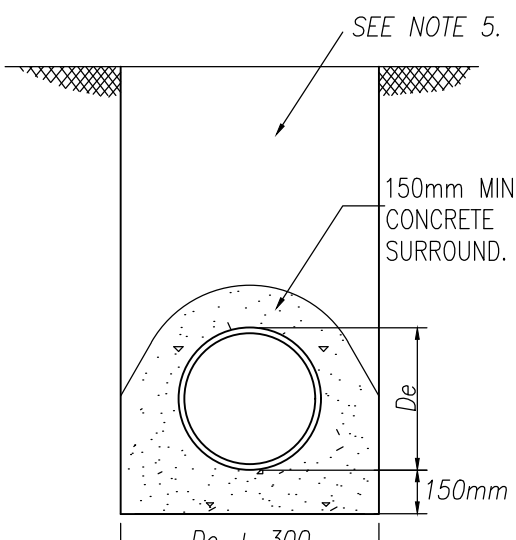
DIM.'F'	DIM.'G'	DIM.'H'	STD. PIPE Ø	EMPTY WEIGHT (kg)	FALL ACROSS UNIT
800	2380	1420	450	325	100



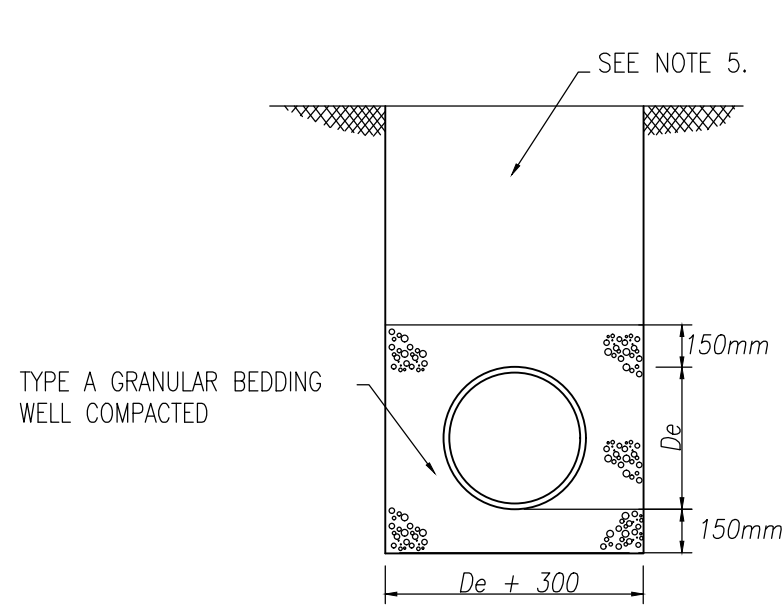
ROAD GULLY



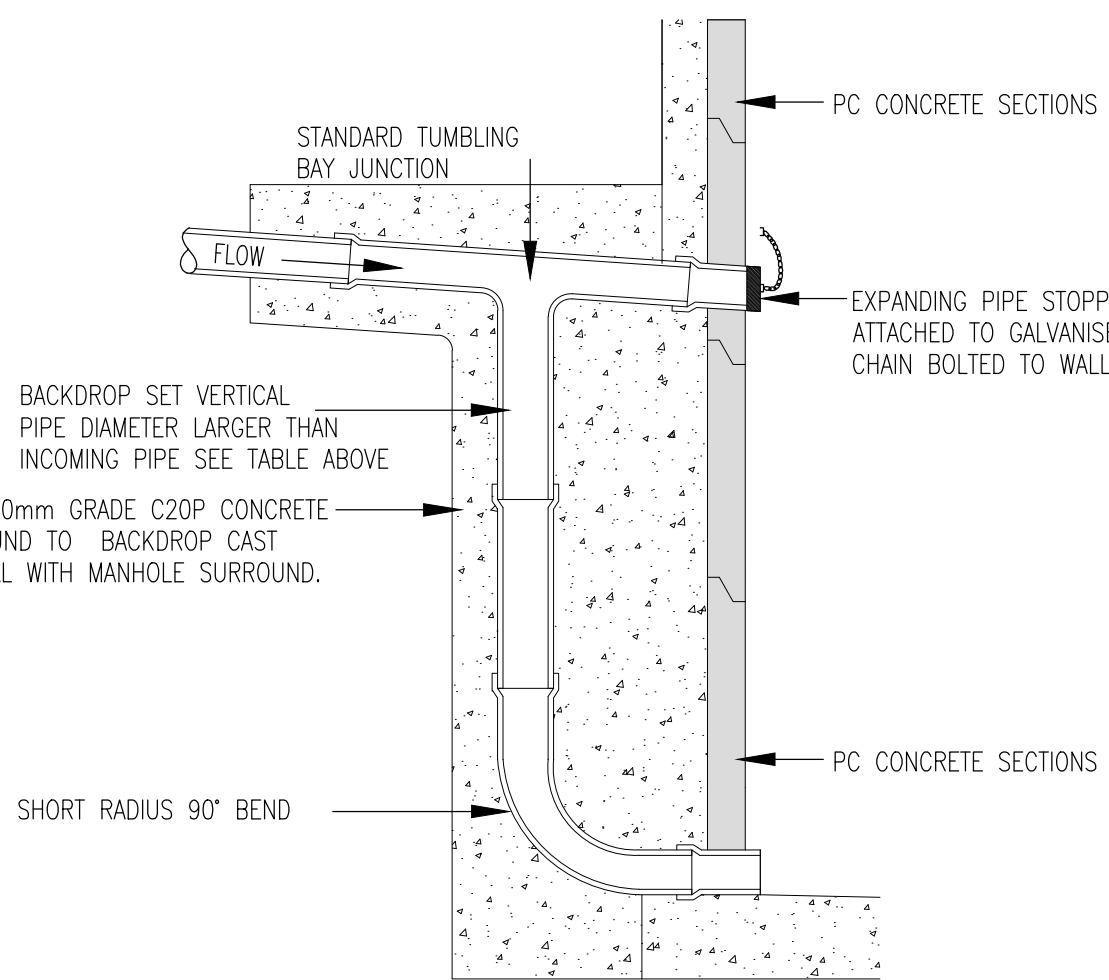
MANHOLE DETAIL PRECAST CONCRETE MANHOLE (UP TO 3.0m DEEP)



CONCRETE BED AND SURROUND WHEN COVER IS LESS THAN 1.2m UNDER ROADS AND FOOTPATHS



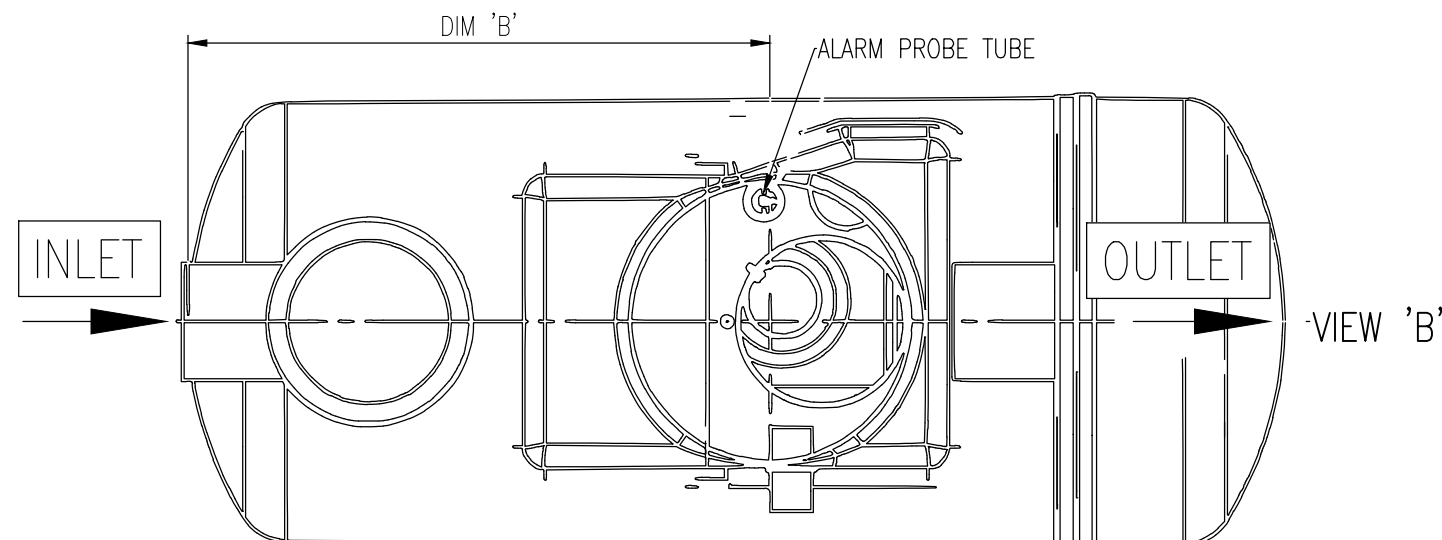
GRANULAR BED AND SURROUND



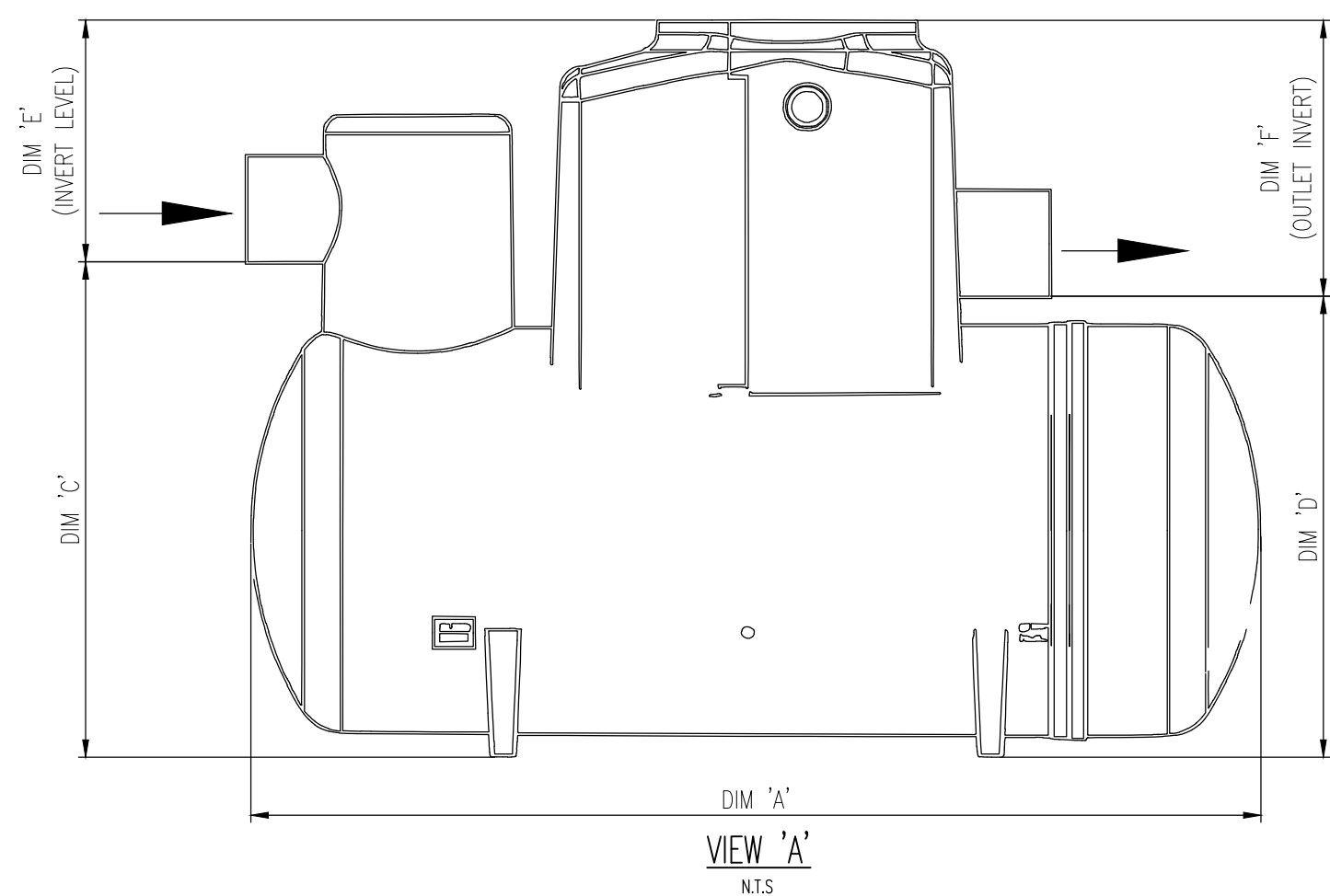
TYPICAL BACKDROP DETAIL

PIPE DIAMETER	ROCKER PIPE LENGTH
150 - 600	0.6
600 - 750	1.0
750 >	SEEK GUIDANCE

DIAMETER OF LARGEST PIPE IN MANHOLE	PRECAST CONCRETE RING SIZE
LESS THAN 375mm	1200mm DIA
375mm TO 450mm	1350mm DIA
500mm TO 700mm	1500mm DIA
750mm TO 900mm	1800mm DIA
GREATER THAN 900mm	PIPE DIA + 900



PLAN VIEW



DETAILS OF PROPOSED LARGESTER BYPASS PETROL INTERCEPTOR

N.T.S.

NOTES:

1. DO NOT SCALE. USE FIGURED DIMENSIONS ONLY.
2. THIS DRAWING IS TO BE READ IN CONJUNCTION WITH ALL OTHER RELEVANT ARCHITECTURAL, ENGINEERING DRAWINGS AND THE GREATER DUBLIN REGIONAL CODE OF PRACTICE V6.0.
3. TYPE A GRANULAR FILL SHALL CONSIST OF WASHED PEA GRAVEL. ALL MATERIAL SHALL PASS A 19mm B.S. SIEVE TEST AND SHALL BE RETAINED BY A 4.75mm B.S. SIEVE TEST.
4. SELECTED FILL SHALL SHALL BE FREE FROM STONES GREATER THAN 25mm IN SIZE, BUILDERS RUBBLE VEGETABLE MATTER AND LUMPS OF CLAY GREATER THAN 75mm IN SIZE AND SHALL BE COMPACTED IN 150mm LAYERS.
5. IN OPEN SPACES BACKFILL SHALL CONSIST OF SUITABLE SELECTED EXCAVATED MATERIAL. UNDER PAVED AREAS BACKFILL SHALL CONSIST OF CLAUSE 808. GENERAL BACKFILL SHALL BE COMPACTED IN LAYERS NOT EXCEEDING 150mm THICK.
6. CONCRETE BED AND SURROUND SHALL BE USED ON ALL PIPES WHERE COVER TO THE SOFT OF THE PIPE IS LESS THAN 1.2m IN ROADS, FOOTPATHS AND GRASS MARGINS AND 0.9m IN OPEN SPACES AND FIELDS.
7. ALL CONCRETE FOR PIPE BEDDING, HAUNCHING AND SURROUNDS SHALL BE GRADE CL 20N/20mm.
8. ALL MANHOLES SHALL BE WATERTIGHT TO THE SATISFACTION OF THE LOCAL AUTHORITY/COUNCIL.
9. FORMWORK TO REINFORCED CONCRETE AND MASS CONCRETE SHALL BE CLASS F2.
10. CLASS U2 FINISH TO THE TOP OF SLABS. REINFORCEMENT TO SLABS TO ENGINEERS DETAILS.
11. 200mm THICK CL 30N/20mm MASS CONCRETE FOUNDATIONS. 225 THICK PRECAST R.C. ROOF SLAB IN CL 30N/20mm CONCRETE. COVER TO STEEL TO BE 40mm.
12. TOE HOLES OF 230mm MINIMUM DEPTH AND GALVANIZED STEEL SAFETY RAILINGS TO BE PROVIDED IN BENCHING OF SEWERS GREATER THAN 525mm DIAMETER AND DEPTH TO INVERT >3m FOR ACCESS TO INVERT.
13. A SAFETY CHAIN IS TO BE PROVIDED ON SEWER PIPES THAT EXCEED 450mm IN DIAMETER. MILD STEEL SAFETY CHAIN SHALL BE 10mm NOMINAL SIZE GRADE W(H) NON CALIBRATED CHAIN, TYPE 1, COMPLYING WITH B.S.4942 PART 2 OR EQUIVALENT.
14. WHEN DEPTH OF MANHOLES TO INVERT IS GREATER THAN 3.0m LADDERS SHALL BE USED INSTEAD OF RUNGS. FIXED LADDERS SHOULD MEET THE DIMENSIONAL REQUIREMENTS OF B.S.4211 OR EQUIVALENT EXCEPT THAT STRINGERS SHOULD NOT BE LESS THAN 65 X 12mm IN SECTION AND RUNGS 25mm IN DIAMETER.
15. LADDER STRINGERS SHOULD BE ADEQUATELY SUPPORTED FROM THE MANHOLE WALL AT INTERVALS OF NOT MORE THAN 2.0m STRINGERS SHOULD BE BOLTED TO CLEATS TO FACILITATE RENEWAL.
16. ALL LADDERS, RUNGS, HANDRAILS, SAFETY CHAIN, ETC. SHALL BE HOT DIPPED GALVANIZED TO B.S.729 OR EQUIVALENT.
17. ALL DRAINAGE WORKS SHALL BE CONSTRUCTED STRICTLY IN ACCORDANCE WITH SOUTH DUBLIN COUNTY COUNCIL REQUIREMENTS FOR TAKING IN CHARGE AND GREATER DUBLIN REGIONAL CODE OF PRACTICE FOR DRAINAGE WORKS.
18. PERTAINING TO FOUL WATER DRAINAGE WORKS - IT IS THE CONTRACTORS RESPONSIBILITY TO ENSURE THAT ALL WORKS ARE CONSTRUCTED IN ACCORDANCE WITH THE IRISH WATER CODE OF PRACTICE AND STANDARD DETAILS. THE CODE OF PRACTICE AND STANDARD DETAILS ARE AVAILABLE TO DOWNLOAD FROM THE IRISH WATER WEB SITE AT WWW.WATER.IE/CONNECTIONS/DEVELOPER-SERVICES/ WHERE THE DETAILS CONTAINED ON THIS DRAWING DIFFER FROM THE IRISH WATER CODE OF PRACTICE OR STANDARD DETAILS THIS MUST BE BROUGHT TO THE ATTENTION OF THE ENGINEER IMMEDIATELY. IRISH WATER STANDARDS WILL TAKE PRECEDENCE.

01	31/01/25	ISSUED FOR PLANNING	IG	IW	
Rev	Date	Description	By	Chk	
Amendments					

Project		CHERRY ORCHARD POINT PHASE 2			
Title		PROPOSED DRAINAGE STANDARD DETAILS			
Client		LAND DEVELOPMENT AGENCY			



BLOCK S, EASTPOINT BUSINESS PARK, ALFIE BYRNE ROAD, DUBLIN D03 H3F4 IRELAND. Tel: (01) 864 8900
Email: info@waterman-moylan.ie www.waterman-moylan.ie

Status	PLANNING				
Designed By	PI	Approved	IW	Waterman Ref	22-010
Drawn By	IG	Date	JAN. 2025	Scales @ A1	1:40
Project - Originator - Volume - Level - Type - Role - Number					Revision
COP-WMC-PH2-00-DR-P- 0230					01